

- NOTES:
1. ALL WIRES TO BE xxxV, xx*, xxx.
 2. OBSERVE DIRTY/CLEAN WIRING PRACTICES.
 3. Dx/Cx MARKERS INDICATE POTENTIAL ROUTING WIRING.
 4. ALL WIRES ARE #XX AWG, UNLESS OTHERWISE NOTED.
 5. ALL WIRES ARE XXX, UNLESS OTHERWISE NOTED.
 6. ALL GROUND WIRES ARE #XX AWG XXXXX, UNLESS OTHERWISE NOTED.

XXXX XXXXXXXX XX XXX XXXXXXXXXX
XX XXX XXXXXXXXXX XXXXXXXXXX
XXXXXX XX XXXXXXXXXX XX XXX
XXXXXX XXXXXX XX XXXXXXXXXX

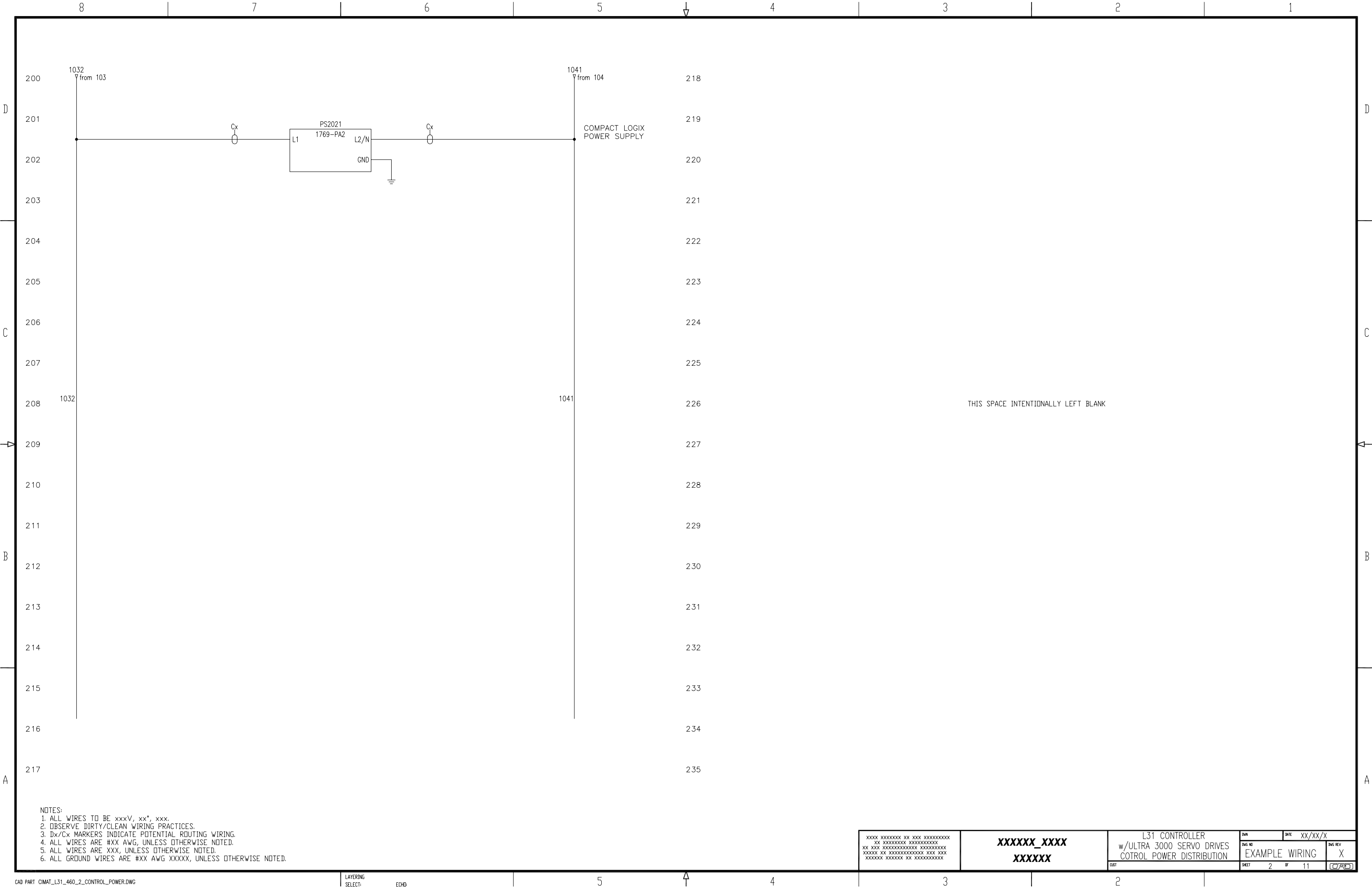
XXXXXX_XXXX
XXXXXX

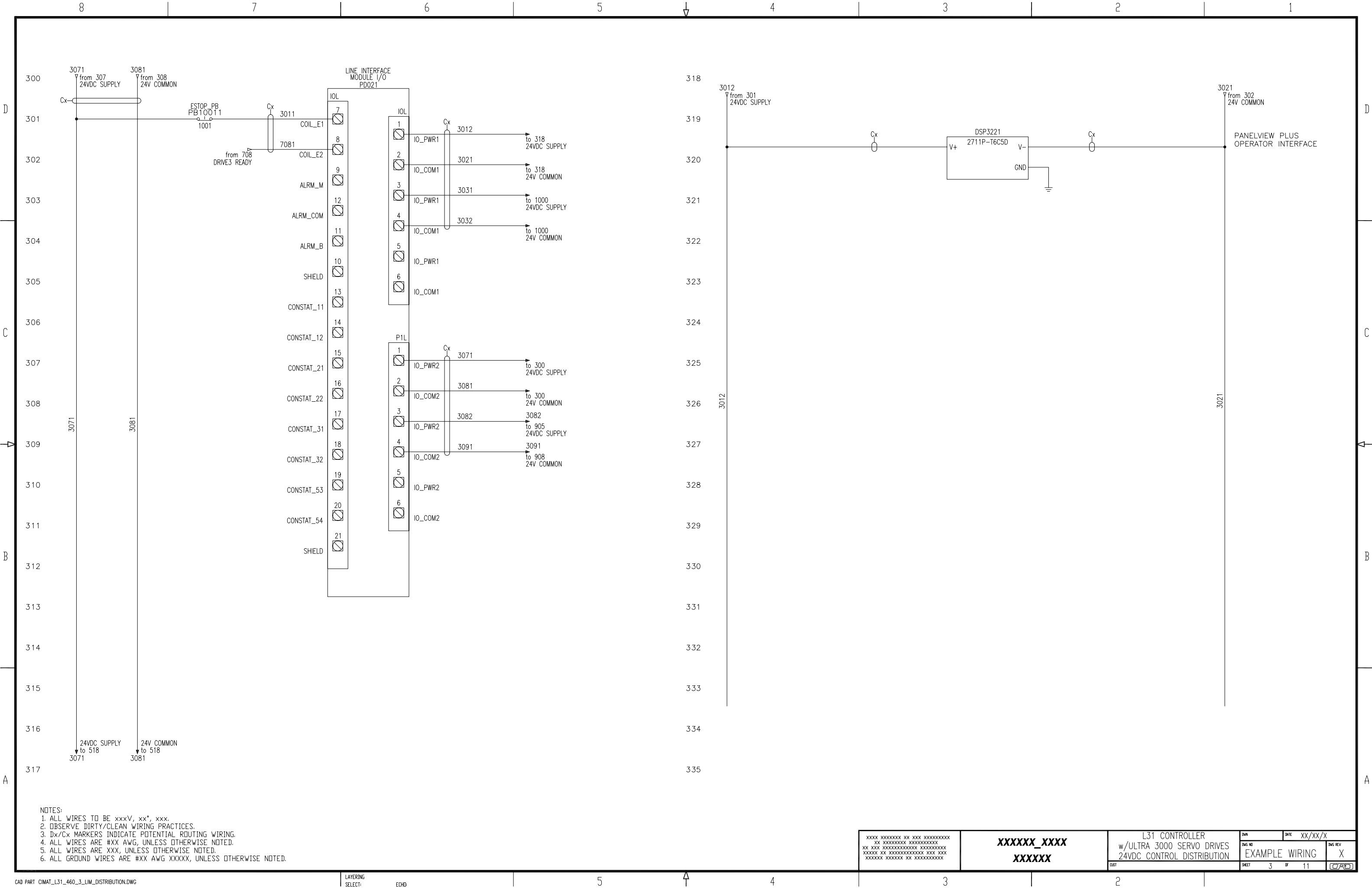
L31 CONTROLLER
w/ULTRA 3000 SERVO DRIVES
POWER DISTRIBUTION

DWG NO
EXAMPLE WIRING

DWG REV
X

SHEET 1 OF 11





XXXX XXXXXXXX XX XXX XXXXXXXXXX
XX XXXXXXXXXX XXXXXXXXXX
XX XXX XXXXXXXXXX XXXXXXXXXX
XXXXXX XX XXXXXXXXXX XXX XXX
XXXXXX XXXXXXXX XX XXXXXXXXXX

XXXXXX_XXXX
XXXXXX

L31 CONTROLLER
w/ULTRA 3000 SERVO DRIVES
24VDC CONTROL DISTRIBUTION

DWG NO
EXAMPLE WIRING

DWG REV
X

SHEET 3 OF 11

CAD

D

C

B

A

D

C

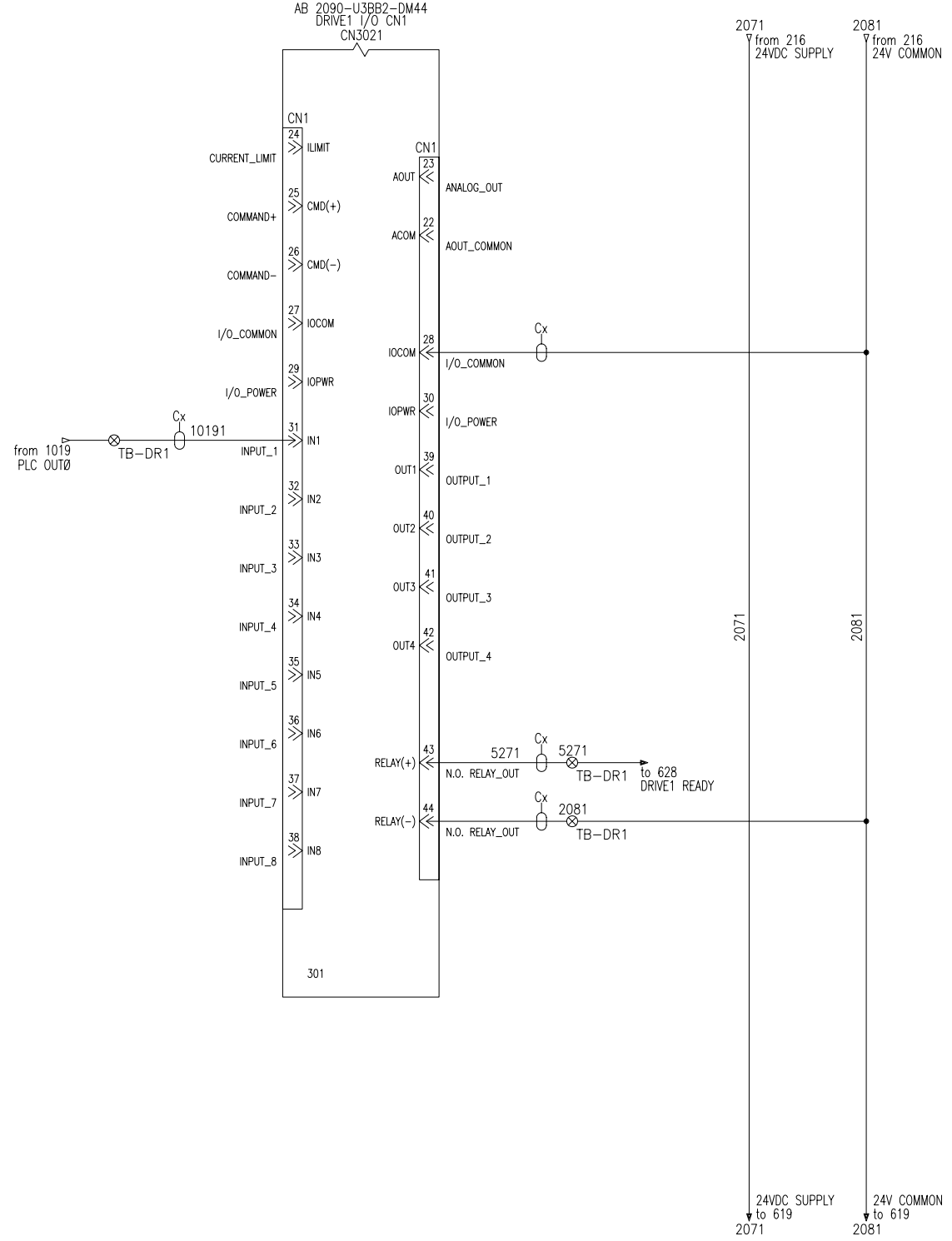
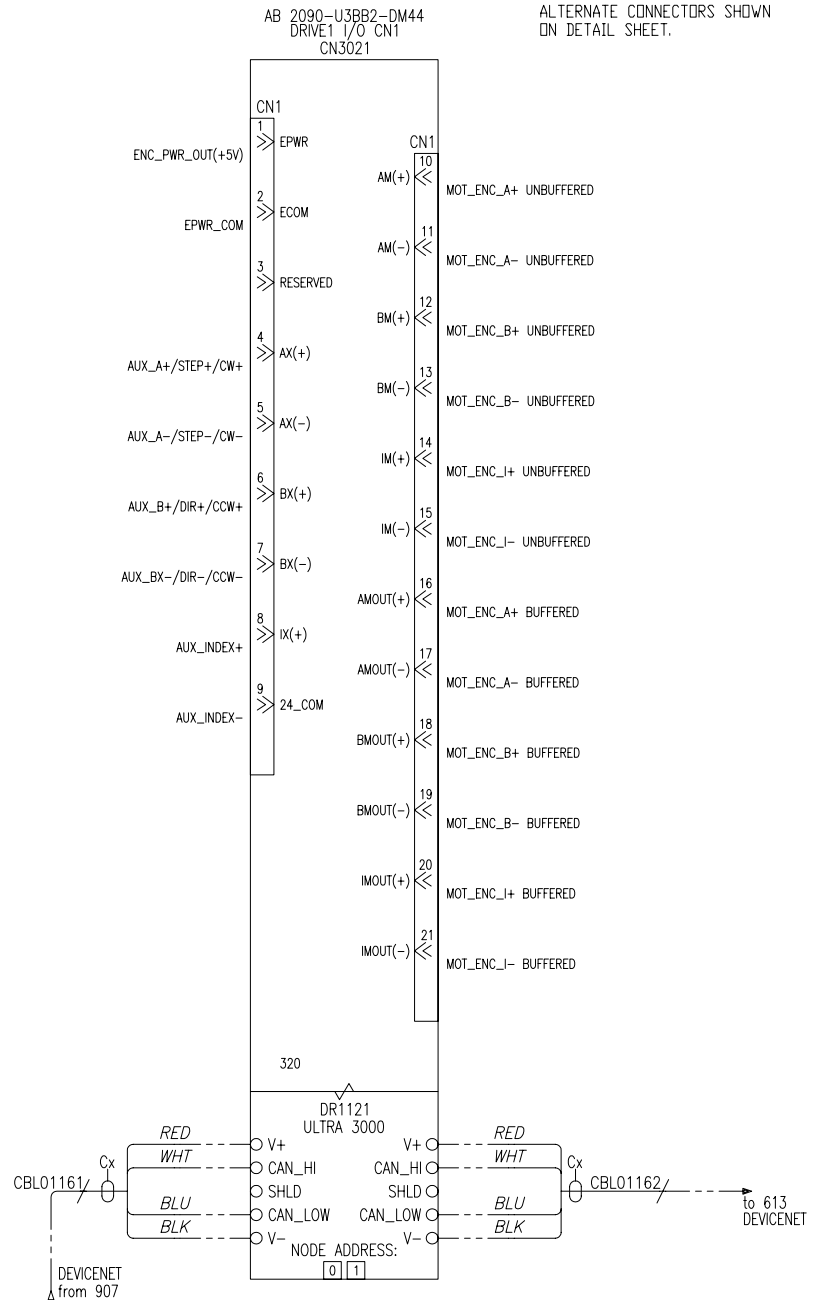
B

A

500
501
502
503
504
505
506
507
508
509
510
511
512
513
514
515
516
517

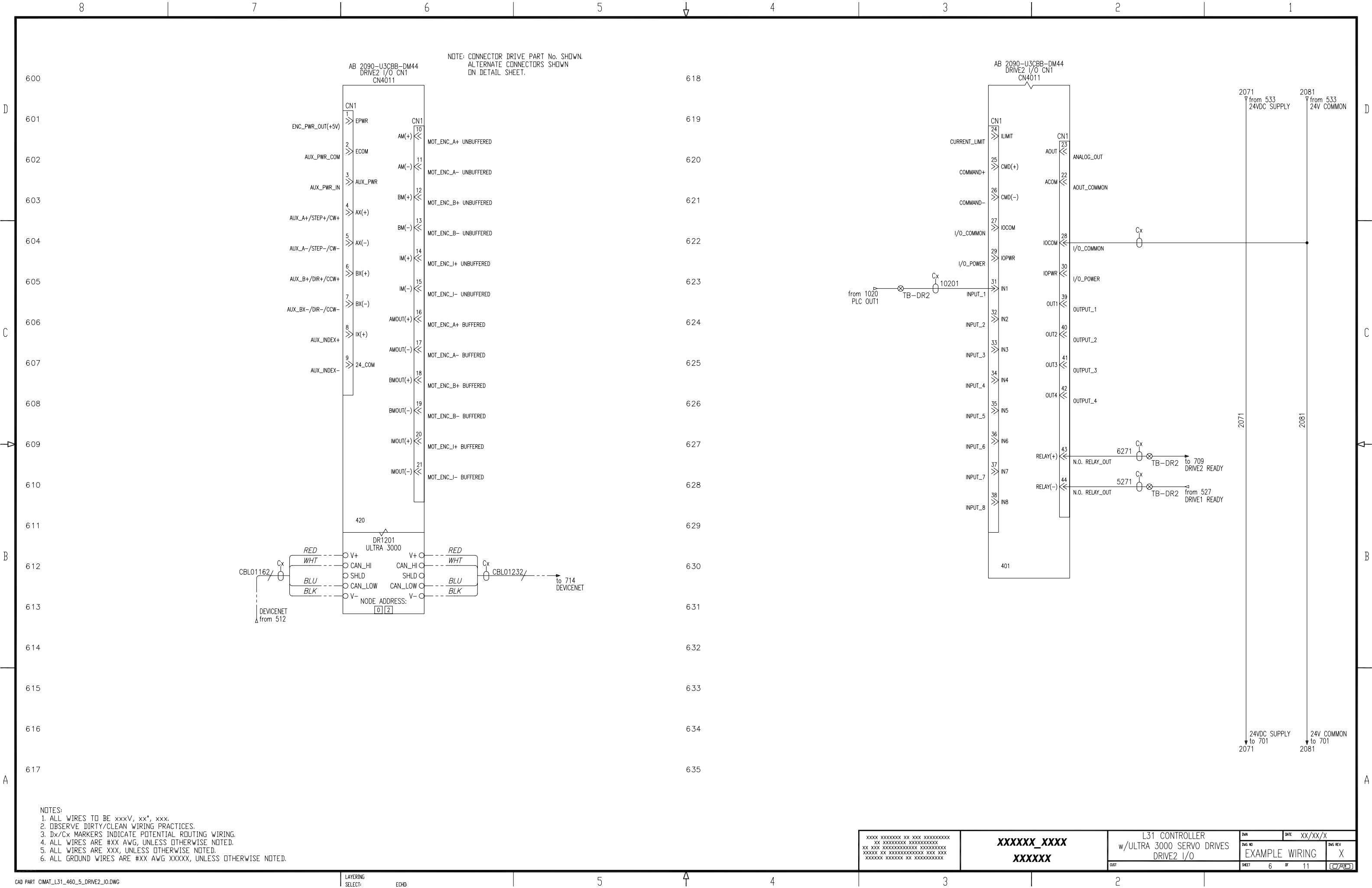
518
519
520
521
522
523
524
525
526
527
528
529
530
531
532
533
534
535

NOTE: CONNECTOR DRIVE PART No. SHOWN.
ALTERNATE CONNECTORS SHOWN
ON DETAIL SHEET.



- NOTES:
1. ALL WIRES TO BE xxxV, xx*, xxx.
 2. OBSERVE DIRTY/CLEAN WIRING PRACTICES.
 3. Dx/Cx MARKERS INDICATE POTENTIAL ROUTING WIRING.
 4. ALL WIRES ARE #XX AWG, UNLESS OTHERWISE NOTED.
 5. ALL WIRES ARE XXX, UNLESS OTHERWISE NOTED.
 6. ALL GROUND WIRES ARE #XX AWG XXXXX, UNLESS OTHERWISE NOTED.

XXXX XXXXXXXX XX XXXXXXXXXXXX XX XXXXXXXXXXXX XXXXXX XXXXXXXXXXXX XXXXXX XXXXXXXX	XXXXXX_XXXX XXXXXX	L31 CONTROLLER w/ULTRA 3000 SERVO DRIVES DRIVE1 I/O	DWG NO	DATE	xx/xx/x
			EXAMPLE WIRING	DWG REV	X
		CUST	SHEET	5	OF



NOTES:
1. ALL WIRES TO BE xxxV, xx*, xxx.
2. OBSERVE DIRTY/CLEAN WIRING PRACTICES.
3. Dx/Cx MARKERS INDICATE POTENTIAL ROUTING WIRING.
4. ALL WIRES ARE #XX AWG, UNLESS OTHERWISE NOTED.
5. ALL WIRES ARE XXX, UNLESS OTHERWISE NOTED.
6. ALL GROUND WIRES ARE #XX AWG XXXXX, UNLESS OTHERWISE NOTED.

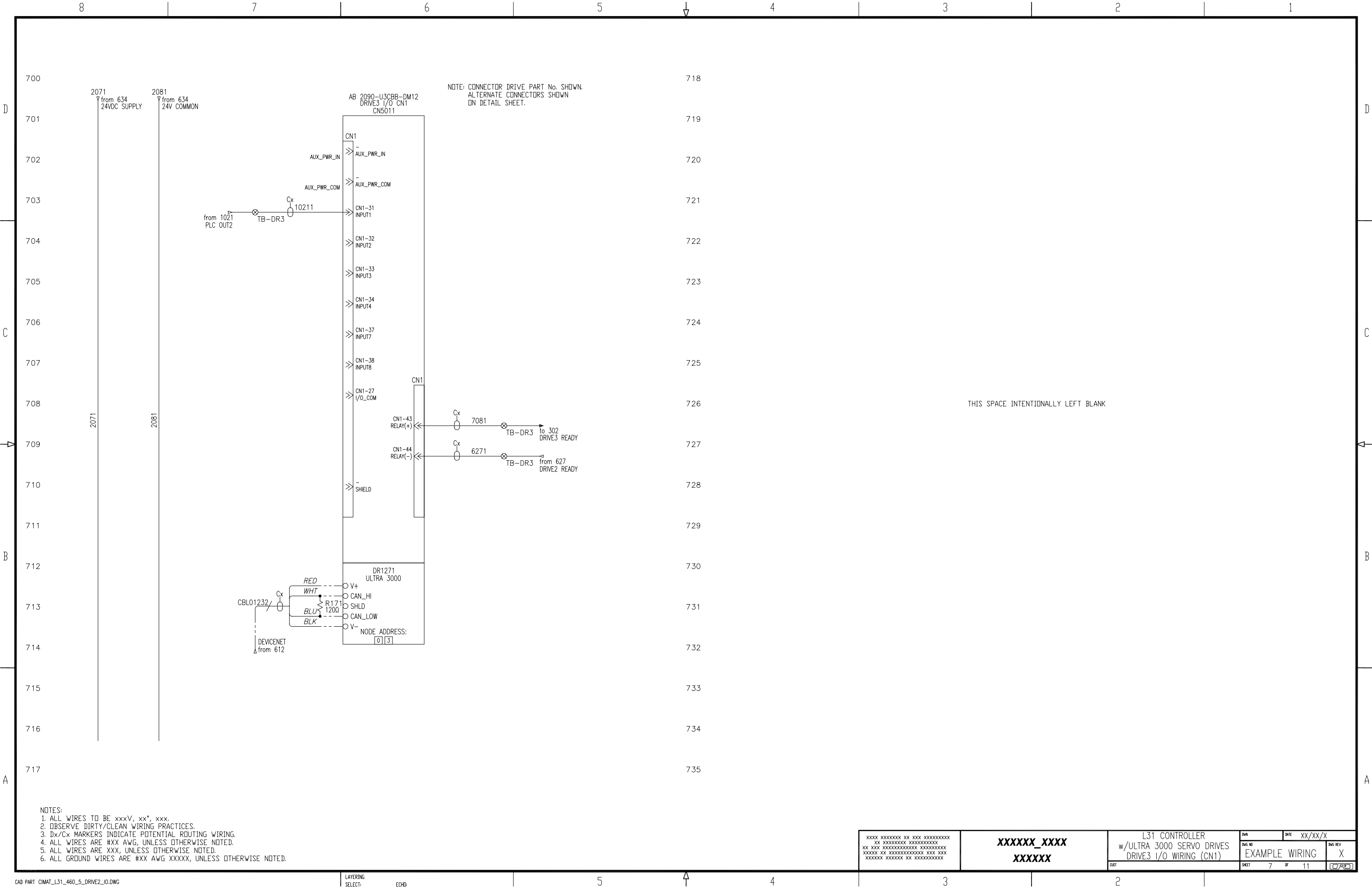
XXXX XXXXXXXX XX XXX XXXXXXXXXX
XX XXXXXXXXXX XXXXXXXXXX
XX XXX XXXXXXXXXX XXXXXXXXXX
XXXXXX XX XXXXXXXXXX XXX XXX
XXXXXX XXXXXXXX XX XXXXXXXXXX

XXXXXX_XXXX
XXXXXX

L31 CONTROLLER
w/ULTRA 3000 SERVO DRIVES
DRIVE2 I/O

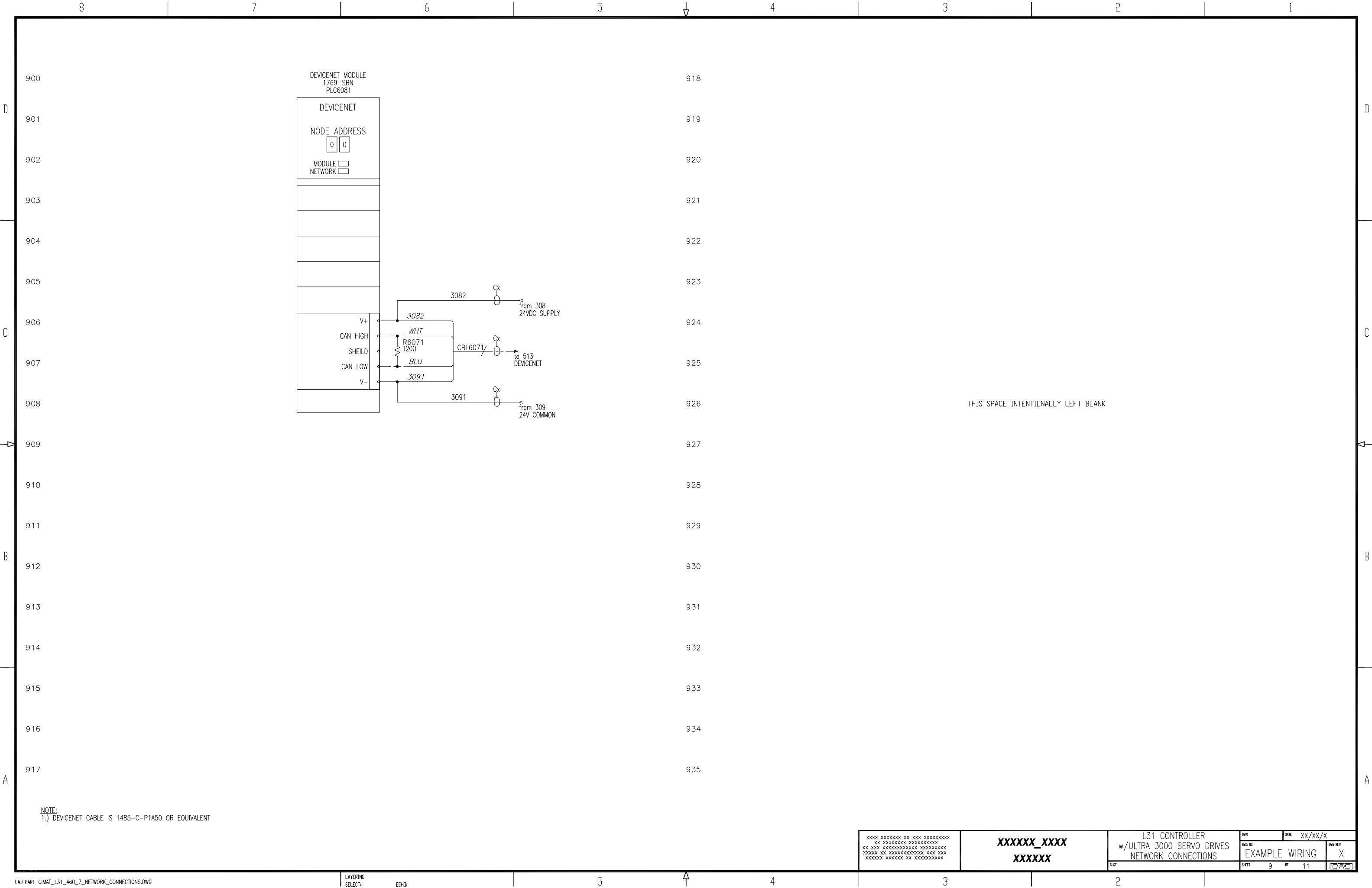
DWG NO
EXAMPLE WIRING

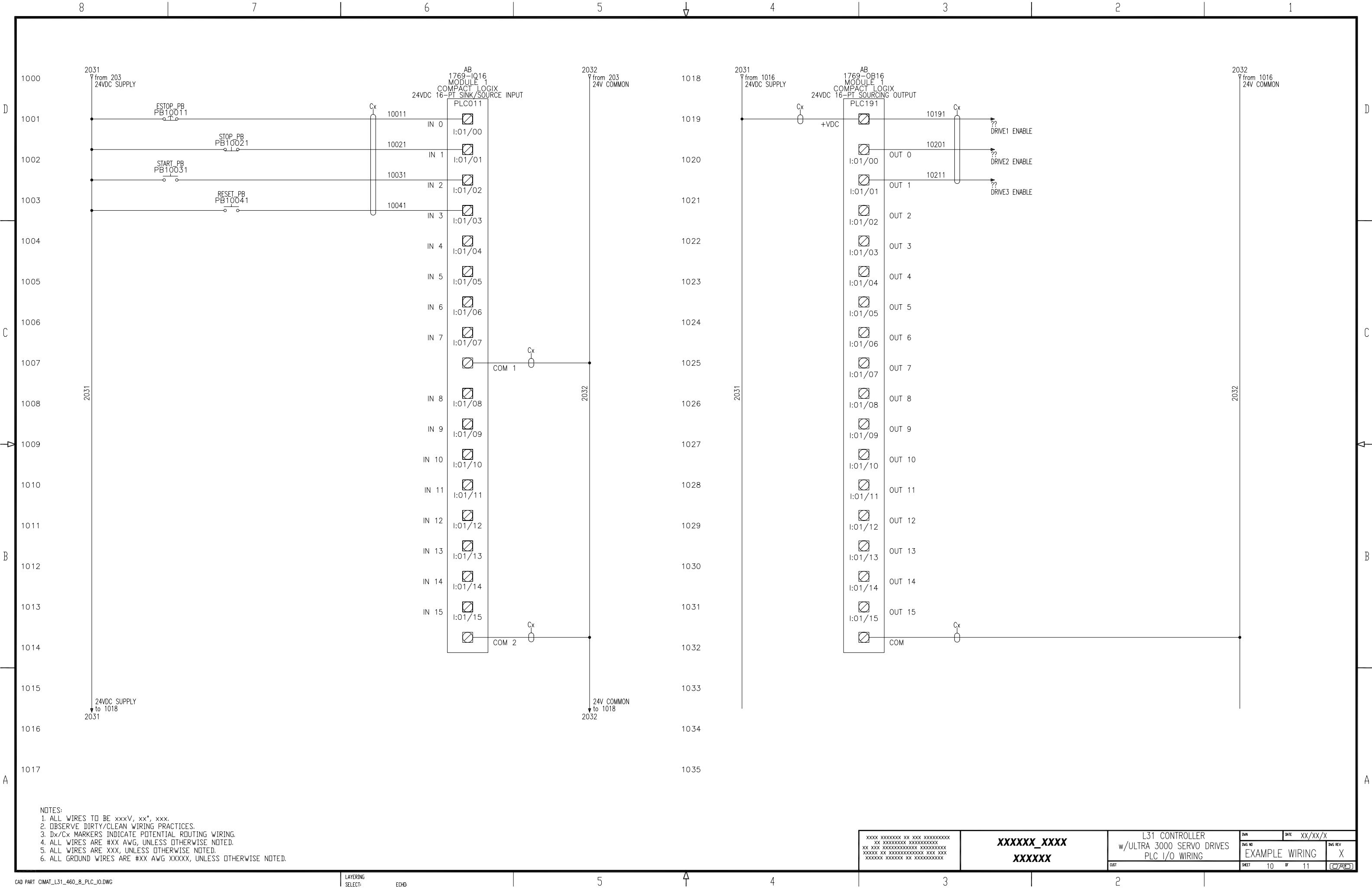
DWG REV
X



NOTES:
1. ALL WIRES TO BE xxxV, xx*, xxx.
2. OBSERVE DIRTY/CLEAN WIRING PRACTICES.
3. Dx/Cx MARKERS INDICATE POTENTIAL ROUTING WIRING.
4. ALL WIRES ARE #XX AWG, UNLESS OTHERWISE NOTED.
5. ALL WIRES ARE XXX, UNLESS OTHERWISE NOTED.
6. ALL GROUND WIRES ARE #XX AWG XXXXX, UNLESS OTHERWISE NOTED.

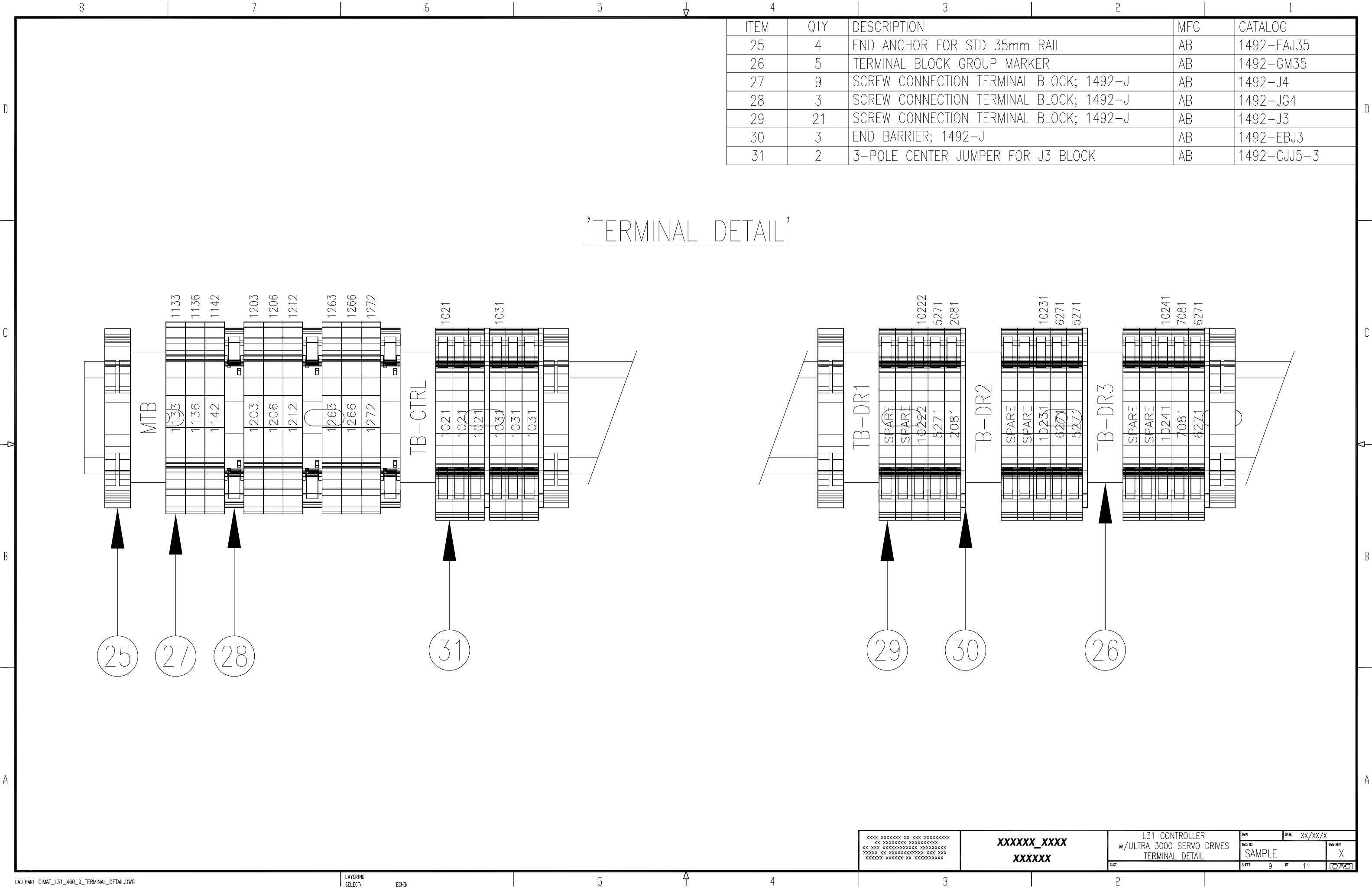
XXXX XXXXXXXX XX XXX XXXXXXXXXX XX XXXXXXXXXX XXXXXXXXXX XX XXX XXXXXXXXXX XXXXXXXXXX XXXXXX XX XXXXXXXXXX XXX XXX XXXXXX XXXXXX XX XXXXXXXXXX		XXXXXX_XXXX XXXXXX	L31 CONTROLLER w/ULTRA 3000 SERVO DRIVES DRIVE3 I/O WIRING (CN1)	DWG NO EXAMPLE WIRING	DATE XX/XX/X	DWG REV X
CUST				SHEET 7	OF 11	(P/R)





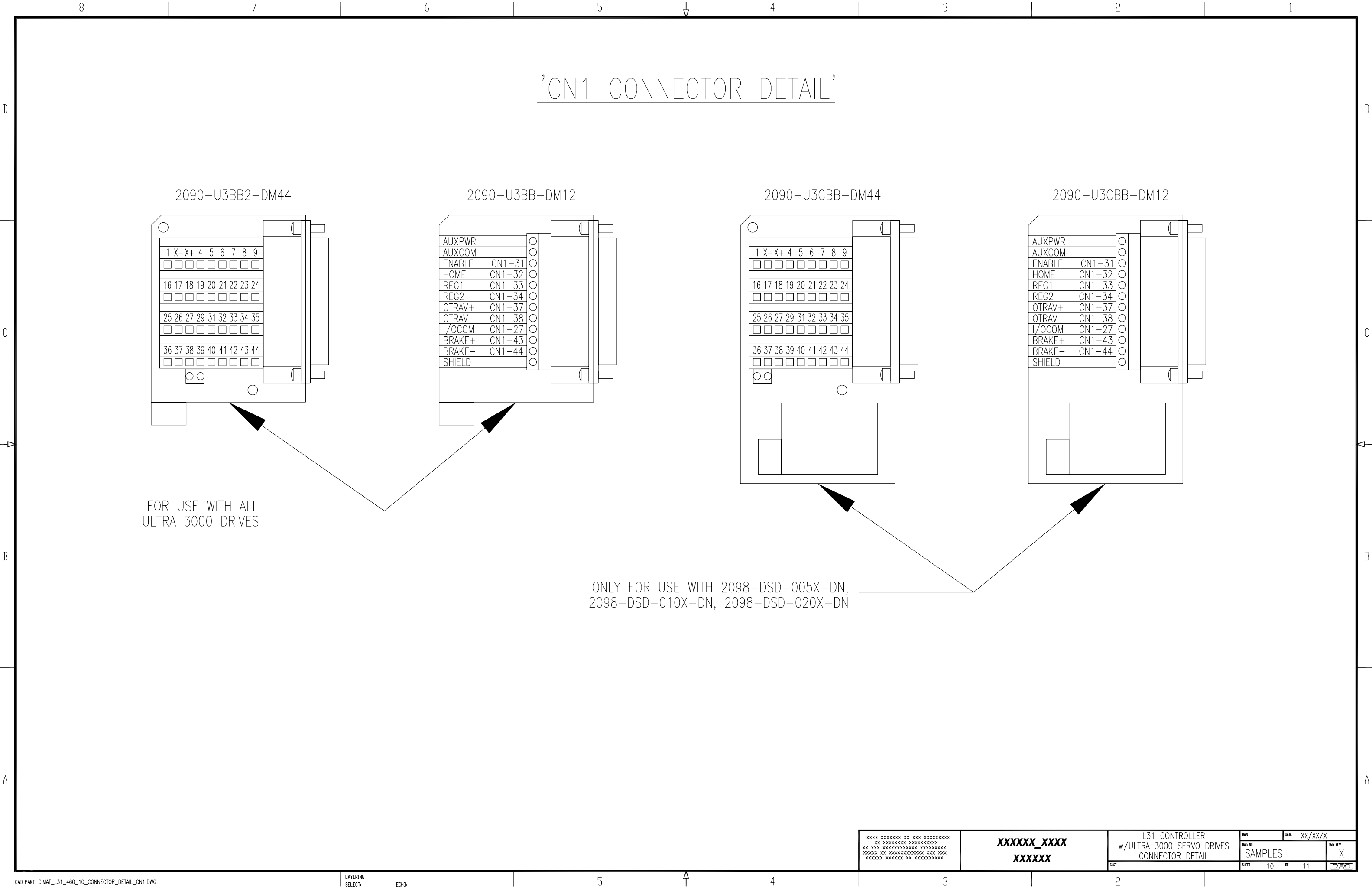
NOTES:
1. ALL WIRES TO BE xxxV, xx*, xxx.
2. OBSERVE DIRTY/CLEAN WIRING PRACTICES.
3. Dx/Cx MARKERS INDICATE POTENTIAL ROUTING WIRING.
4. ALL WIRES ARE #XX AWG, UNLESS OTHERWISE NOTED.
5. ALL WIRES ARE XXX, UNLESS OTHERWISE NOTED.
6. ALL GROUND WIRES ARE #XX AWG XXXXX, UNLESS OTHERWISE NOTED.

XXXX XXXXXXXX XX XXX XXXXXXXXXX XX XXXXXXXXXX XXXXXXXXXX XX XXX XXXXXXXXXX XXXXXXXXXX XXXXXX XX XXXXXXXXXX XXX XXX XXXXXX XXXXXXXX XX XXXXXXXXXX		XXXXXX_XXXX XXXXXX		L31 CONTROLLER w/ULTRA 3000 SERVO DRIVES PLC I/O WIRING		DWG NO EXAMPLE WIRING	DATE XX/XX/X	DWG REV X
CUST		SHEET 10 OF 11		CADD				



'TERMINAL DETAIL'

ITEM	QTY	DESCRIPTION	MFG	CATALOG
25	4	END ANCHOR FOR STD 35mm RAIL	AB	1492-EAJ35
26	5	TERMINAL BLOCK GROUP MARKER	AB	1492-GM35
27	9	SCREW CONNECTION TERMINAL BLOCK; 1492-J	AB	1492-J4
28	3	SCREW CONNECTION TERMINAL BLOCK; 1492-J	AB	1492-JG4
29	21	SCREW CONNECTION TERMINAL BLOCK; 1492-J	AB	1492-J3
30	3	END BARRIER; 1492-J	AB	1492-EBJ3
31	2	3-POLE CENTER JUMPER FOR J3 BLOCK	AB	1492-CJJ5-3



'CN1 CONNECTOR DETAIL'

2090-U3BB2-DM44

2090-U3BB-DM12

2090-U3CBB-DM44

2090-U3CBB-DM12

FOR USE WITH ALL
ULTRA 3000 DRIVES

ONLY FOR USE WITH 2098-DSD-005X-DN,
2098-DSD-010X-DN, 2098-DSD-020X-DN

XXXX XXXXXXXX XX XXX XXXXXXXXXX
XX XXXXXXXXXX XXXXXXXXXX
XX XXX XXXXXXXXXX XXXXXXXXXX
XXXXXX XX XXXXXXXXXX XXX XXX
XXXXXX XXXXXXXX XX XXXXXXXXXX

XXXXXX_XXXX
XXXXXX

L31 CONTROLLER
w/ULTRA 3000 SERVO DRIVES
CONNECTOR DETAIL

DWG NO	DATE	XX/XX/X
SAMPLES	DWG REV	X
SHEET	10	OF 11

D

C

B

A

2301

2302

2303

2304

2305

2306

2307

2308

2309

2310

2311

2312

2313

2314

2315

2316

2317

2318

FROM
MOTOR ENCODER

ENCODER CABLE
AB 2090-XXNFMP-S03

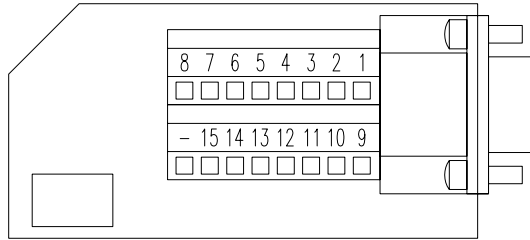
ULTRA3000 DRIVE
ENCODER CONNECTOR
CN2

CN2
BLACK → AM(+)
WHITE/BLACK → AM(-)
RED → BM(+)
WHITE/RED → BM(-)
GREEN → IM(+)
WHITE/GREEN → IM(-)
BROWN → (+)LIMIT
WHITE/BROWN → (-)LIMIT
WHITE/GRAY → ECOM
GRAY → EPWR_5V
ORANGE → EPWR_9V*
WHITE/ORANGE → TS
WHITE/YELLOW → S3
YELLOW → S2
WHITE/BLUE → S1

'CN2 CONNECTOR DETAIL'

TERMINAL	SIGNAL	TERMINAL	SIGNAL
1	AM+	9	+LIMIT
2	AM-	10	IM-
3	BM+	11	TS
4	BM-	12	S1
5	IM+	13	S2
6	ECOM	14	EPWR_5V
7	EPWR_9V*	15	-LIMIT
8	S3	-	GROUND

*NOTE: ONLY AVAILABLE ON 2098-xxD-005,-010,-020 DRIVES



CN2 BREAKOUT CONNECTOR
AB 2090-UXBB-DM15

